

2012 1-0491

(
2011 12 31
2011 12 31

3101

2011 12 31

2012 3 08

2011

(

[2008]7

2011

12 31

()

1.

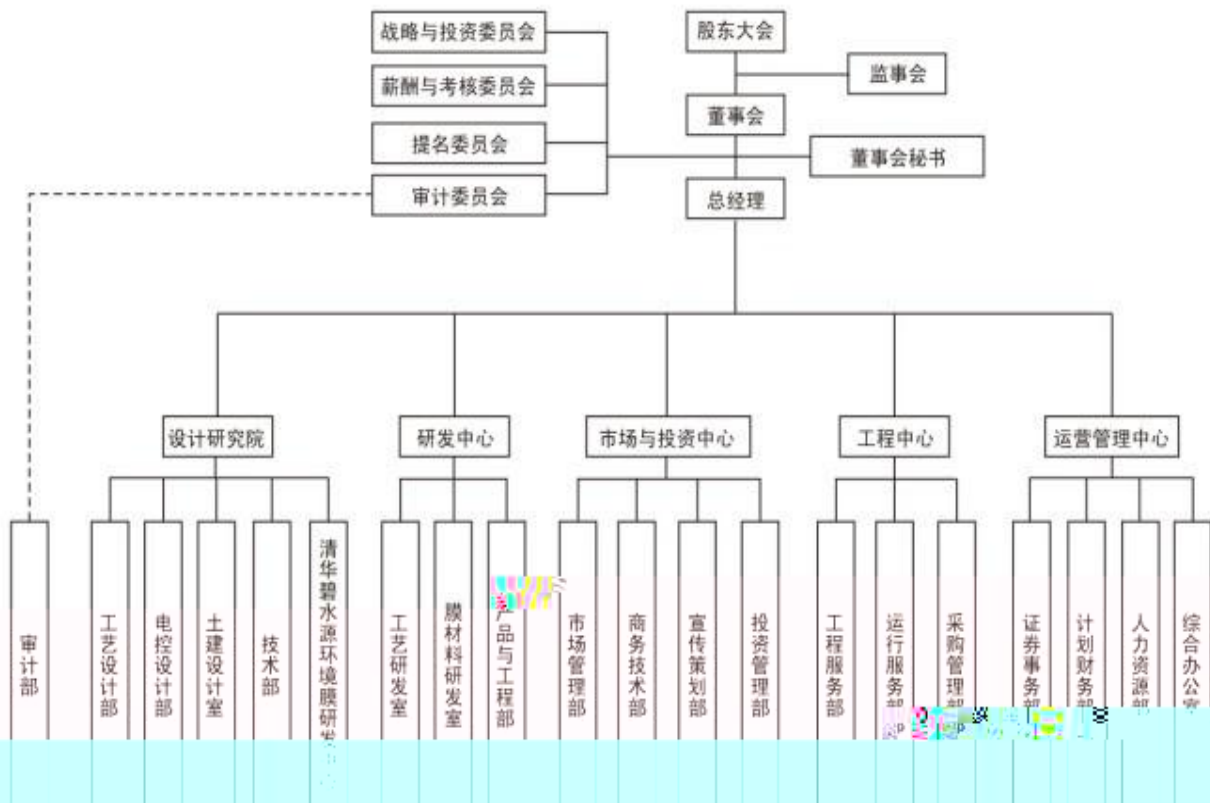
1

2

3

4

2.



3.

4.

5. 2011
2011

()

1

MBR

2

3

()

1

4

()

()

()

()

()

()

()

2011 12 31

()

()

()

1

2

3